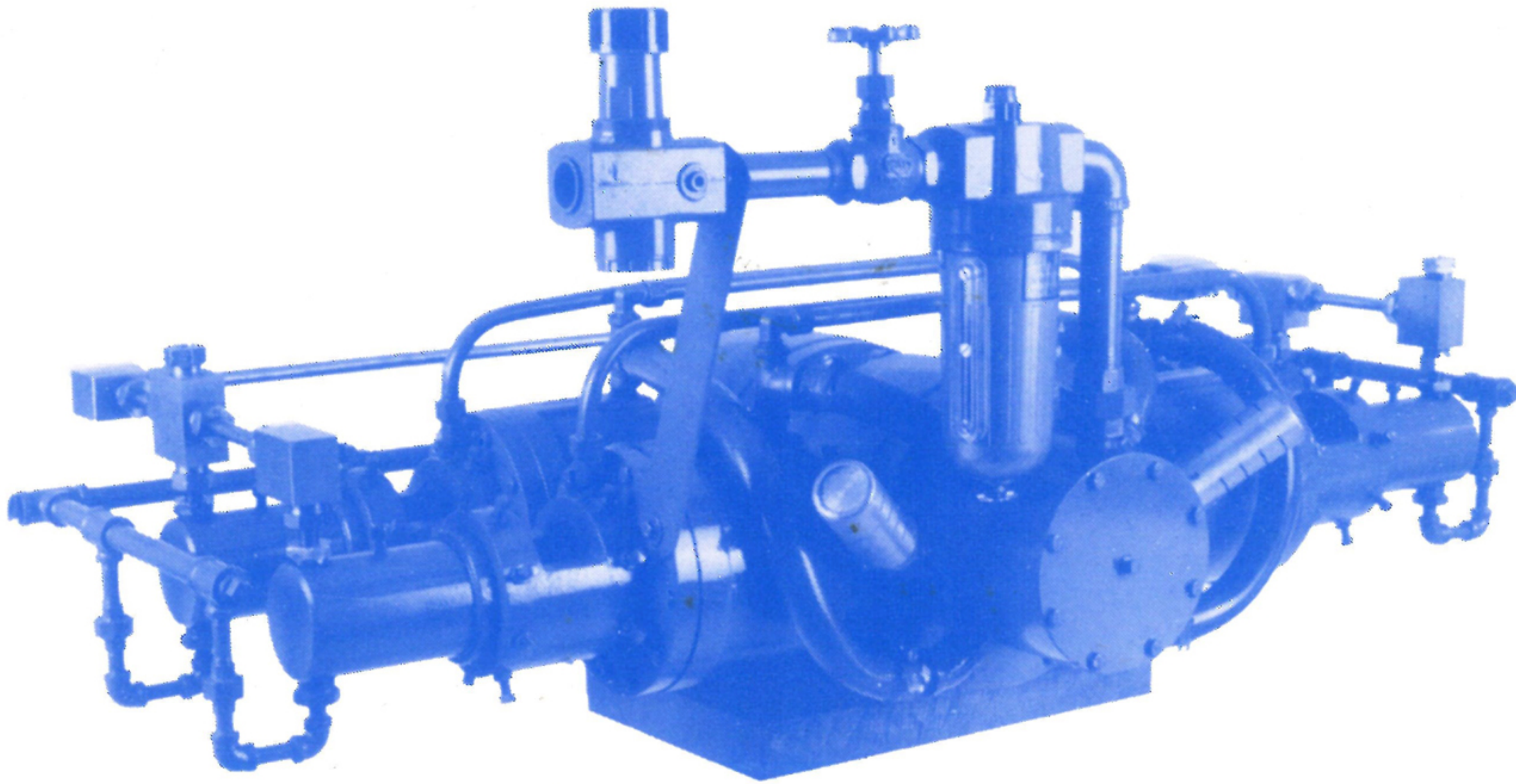


MAC-A-15-26

GAS OR AIR DRIVEN HYDROSTATIC TESTING AND CHEMICAL INJECTION PUMP



The Mac-A-15-26 has four power cylinders, double acting, and four pumping ends, single acting, which are designed to give a constant flow of fluid with little pulsation. This pump is specifically designed for extremely high pressure hydrostatic testing and injection services.

VOLUME AND PRESSURE CHART
BASED ON 100 CYCLES PER MINUTE — 100 PSI AIR INPUT PRESSURE

PLUNGER OR PISTON SIZE	*VOLUME IN GPM	SINGLE POWERED		DOUBLE POWERED	
		OPERATING PSIG	*STALL PSIG	**OPERATING PSIG	***STALL PSIG
1/4	.15	40320	48960	80640	97920
5/16	.24	25805	31334	51610	62669
3/8	.34	17920	21760	35840	43520
1/2	.61	10080	12240	20160	24480
5/8	.96	6451	7834	12902	15667
<input type="checkbox"/> 3/4	1.38	4480	5440	8960	10880
<input type="checkbox"/> 1	2.45	2520	3060	5040	6120
1-1/4	3.82	1613	1958	3226	3917
1-1/2	5.51	1120	1360	2240	2720
1-3/4	7.50	823	1000	1646	2000
2	9.79	630	765	1260	1530

*GPM based on 90% volumetric eff.

**Operating PSI based on 70% of max.

***Stall PSI based on 85% of max.

☐ Sizes normally in stock.